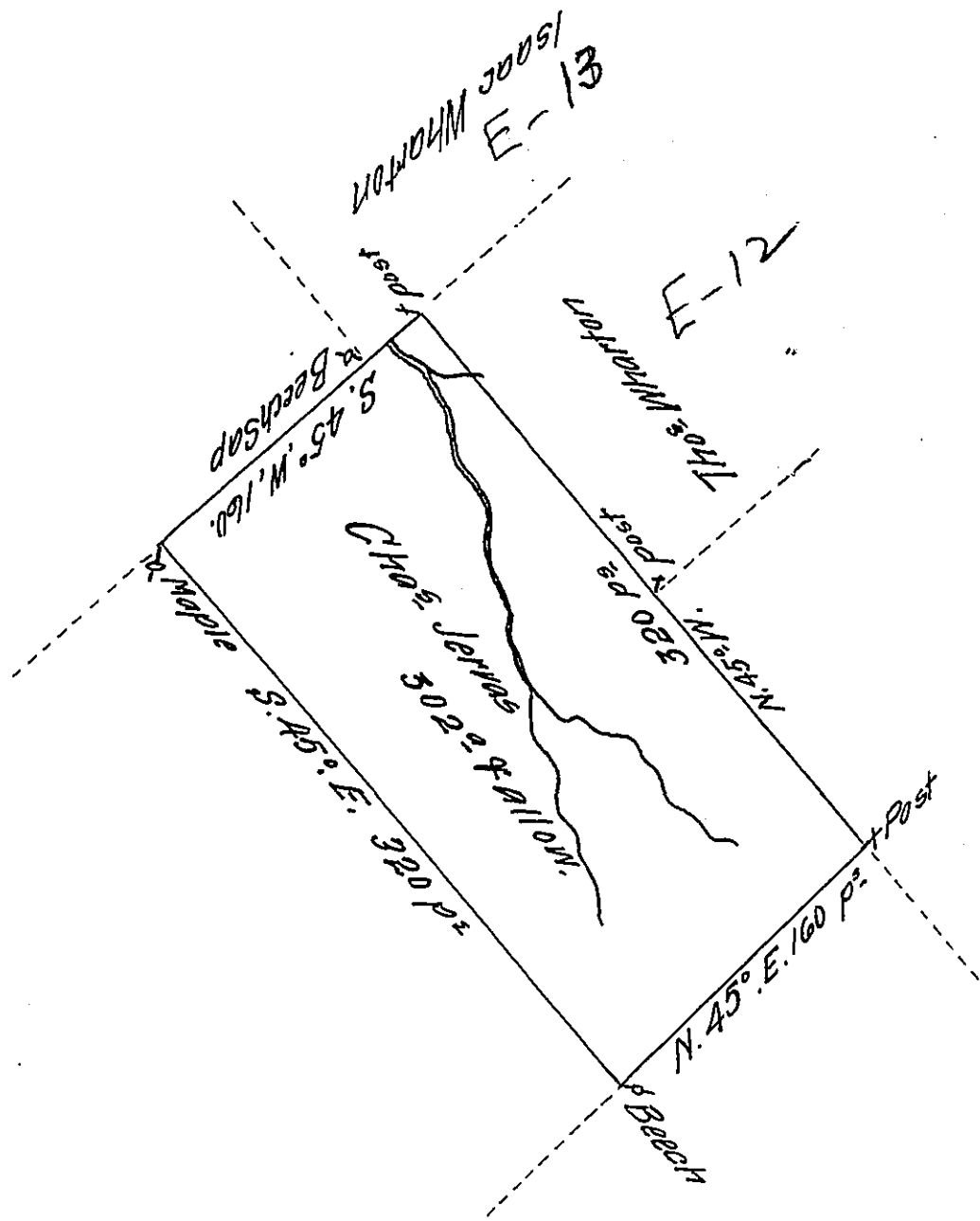


339



A Draught of a Tract of Land Called \_\_\_\_\_ Situate near a path leading from Worring to Onaguaga town adjoining land Surveyed for Isaac Wharton in the County of Northumberland Containing Three hundred and two Acres besides the usual allowance of six p Cent for Roads &c. Surveyed the 18<sup>th</sup> day of September 1774 for Charles Jervas in pursuance of a warrant dated the 9<sup>th</sup> Day of May 1774.

by Chas Stewart D<sup>r</sup> Surv<sup>r</sup>

To John Lukens Esq<sup>r</sup> Survey<sup>r</sup> Gen<sup>l</sup>  
now Luzerne County

IN TESTIMONY that the above is a copy of the original remaining on file in the Department of Internal Affairs of Pennsylvania, made conformably to an Act of Assembly approved the 16th day of February, 1833, I have hereunto set my Hand and caused the Seal of said Department to be affixed at Harrisburg, this first day of February 1911.

*Henry Houck*

Secretary of Internal Affairs.